





 <https://nrgdv.ru/>

 +7 499 350 85 07

 6 Luzhnetskaya Naberezhnaya, building 1, floor 3, office 310, Moscow, 119270

**ООО "Энерджи Девелопмент"**

## Powerful portable industrial videoendoscope VRScope X3-E



**VRScope X3-E**

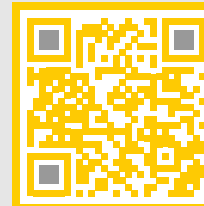
Наш сайт



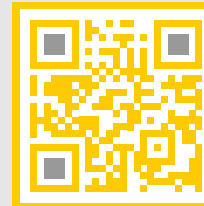
You Tube



Telegram



VK



## Features

- Ultra-portable and easy to carry
- Quick-change design for probe replacement
- 5.44-inch Full HD AMOLED touchscreen display
- Industrial HD camera with resolution 1,000,000 pixels
- Dual power supply, longer battery life
- Quickly create inspection reports
- Optional ultraviolet (UV) and infrared (IR) illumination

## Brief description

The VRScope X3-E is Coantec's mechanically operated, multi-functional industrial videoendoscope. The Videoscope features a high-resolution industrial video camera and a 5.44-inch full HD AMOLED touchscreen display that accurately captures images. An image sensor with high frame rate ensures smooth and accurate image reproduction. The design that allows for quick probe changes makes operation more convenient. White light, IR and UV light sources. The battery life is more than 5 hours.



# Efficiency features

## Ultra-portable and convenient

Ergonomic and lightweight (only < 1 kg) comfortable to hold in your hand. The videoendoscope fits in a compact case that can be stowed under the passenger seat on an airplane. The sensitive joystick allows precise control of the distal end bending angle, has a sensitive response, no lag, and is a pleasure to operate. Inspections can be done quickly, anytime and anywhere.

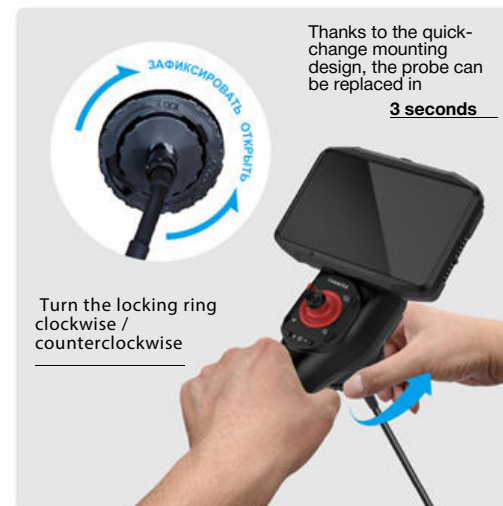
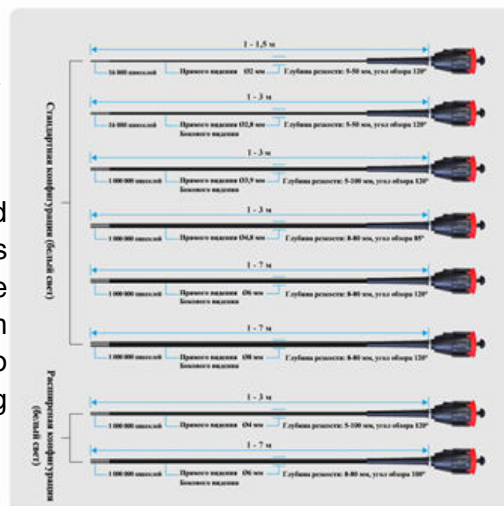


## High-quality images

The product utilizes a 1 megapixel high-definition video camera, a built-in image sensor and a high-definition 5.44" OLED touchscreen display. The image is clear and even, smooth and realistic, making it easy to inspect small defects inside equipment or assemblies.

## Interchangeable probes for any inspection task

One VRScope X3-E can be equipped with several interchangeable probes with different characteristics. The length, diameter and illumination method of the probes can be tailored to suit the requirements, thus reducing costs.



## Quick-change design for probe replacement

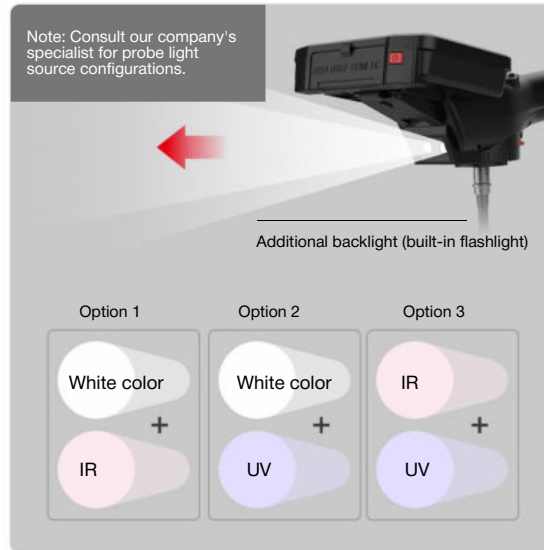
The videoscope has a quick-release design that does not require a special tool, just turn the locking ring clockwise/counter-clockwise. With this design, a replaceable probe can be replaced in seconds.



# Efficiency features

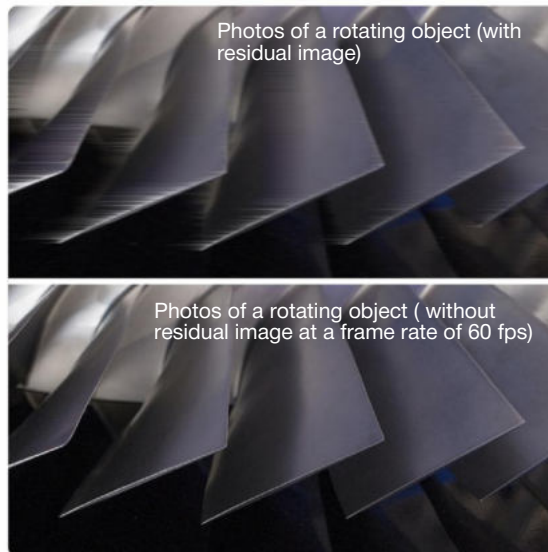
## Optional ultraviolet (UV) and infrared (IR) illumination

You can install three light sources - white light, infrared IR (inspect dark areas) and UV (lum control of micro-cracks, search for lubricant leaks). It is possible to use different sources at the same time, and you can increase the efficiency with additional backlight for a better image.



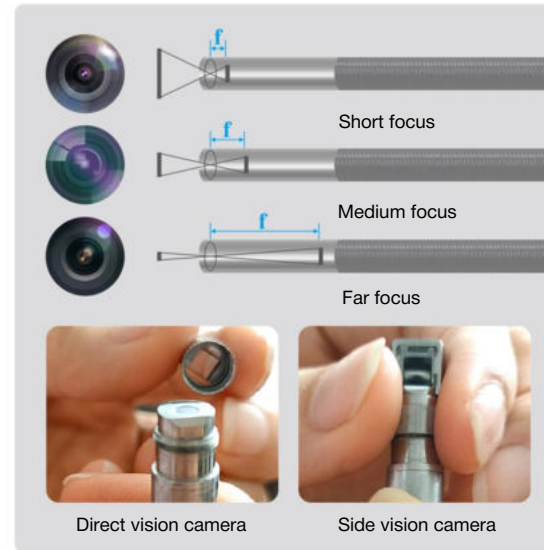
## High frame rate

60 frames per second ensures smooth and accurate image reproduction. The lag, residual image and jitter are substantially reduced. Rotating and fast moving objects can be viewed more effectively.



## Interchangeable cameras with different focal lengths

It is possible to use interchangeable forward and side vision probes with long, short and medium focus. The VRScope X3-E is suitable for viewing objects from various distances and provides sharper images.



## Dual power supply, long battery life

A dual power supply is used. A high-capacity lithium-polymer rechargeable battery is built into the display, and the handle is equipped with a replaceable backup battery. Both batteries can recharge each other to achieve long run times. Continuous operation time of more than 5 hours.



# Technical specifications

## BASIC FEATURES

Model		VRScope X3 - 3920E	VRScope X3 - 3930E	VRScope X3 - 6020E	VRScope X3 - 6030E	VRScope X3 - 6040E	VRScope X3 - 6070E	VRScope X3 - 60100E
Operating part (probe)	Probe diameter	ø 3,9 mm		ø 6,0 mm				
	Probe length	2,0 m	3,0 m	2,0 m	3,0 m	4,0 m	7,0 m	10,0 m
	Outer braid	High-strength tungsten braid						
	Probe flexibility	Uniform rigidity						
	Interchangeability	Possible for all probe models						
	Temperature sensor	2-stage indicator for high temperature alarm						
Bendable part	Bending angle up/ down/ right/ left	up to 150°	up to 130°	up to 160°	up to 130°	up to 130°	up to 90°	up to 90°
	Bending mechanism	Mechanical control of distal bending with joystick, rotating 360°						
Approximate system weight (including battery)		<1.5 kg						
Lighting		Super-bright LED backlight						
Direct view optical system (D)	Field of view	120°						
	Depth of focus	5 to 50 mm / 5 to 100 mm / from 25 mm to (select when ordering)		5 to 30 mm / 8 to 80 mm / from 20 mm to " (select when ordering)				
	Lens type	integrated optical						
Optical side vision system (S)	Field of view	70°						
	Depth of focus	5 to 50 mm / 5 to 100 mm / from 25 mm to (select when ordering)		5 to 30 mm / 8 to 80 mm / from 20 mm to (select when ordering)				
	Lens type	integrated optical						
	Depth of focus	unavailable		5 to 30 mm / 8 to 80 mm / 20 mm to (as for direct view)				
	Lens type	interchangeable optical						

<b>Dimensions (WxDxH)</b>		295 x 145 mm x 163 mm
<b>Transport case dimensions</b>		411 x 321 x 165 mm. The hand luggage size of most airlines.
<b>Display</b>		5.44-inch FHD AMOLED touchscreen display with wide angle of view
<b>Display resolution</b>		H1920 x V1080 (pixels)
<b>LCD brightness levels</b>		220± 10% V, 50 Hz with AC adapter
<b>Power supply</b>	<b>AC network</b>	3.7 V 8,000 mAh
	<b>Battery (non-removable)</b>	3.7V, 5,000 mAh. Battery life : >5 hours.
	<b>Battery</b>	HDMI (standard)
<b>Video output standard</b>		3.5mm audio output socket (optional)
<b>Headset (microphone input/ audio output)</b>		3.5mm audio output socket
<b>SOFTWARE FEATURES</b>		
<b>Image functions</b>		5x digital zoom and full screen display mode / image centering, 9-step brightness adjustment
<b>Dynamic noise suppression</b>		In real time to improve image quality
<b>In real time to improve image quality</b>		5x magnification during examination. Supports enlarging the image while viewing photos via the "pinch" gesture of the touch display
<b>Functional modes</b>		Reference color mode, black and white mode, negative mode, high color density modes
<b>Rotate images</b>		0°, 90°, 180°, 270° rotation
<b>Annotations</b>		Lines, arrows, rectangles, circles, text
<b>Bluetooth connection</b>		Optional
<b>WiFi module</b>		Optional
<b>Menu languages</b>		Chinese, English, French, Russian.
<b>Data entry languages</b>		Chinese, Russian, English, German, French. Input languages can be downloaded when WiFi is activated.

## RECORDING CONTROL FEATURES

Information media	RAM	2 GB
	Data storage memory	Standard storage capacity -16 GB, expandable to 32 GB or 64 GB (optional)
	Optional	External USB 3.0 and Type C
Watermark settings		Time/ date
Static image recording	Resolution	H1280 x V720 (pixels), 1,000,000 pixels
	Recording format	Compression format: JPEG
	Image recording	Image capturing supported while video recording
Video recording	Resolution	H1280 x V720 (pixels), 1,000,000 pixels
	Recording format	MPEG 4
	Frame rate	30 fps /60 fps (for probes up to 3.0 m in length) 30 fps

## OPERATING CONDITIONS

Operating temperature	Operating part (probe)	"for 0 3.9 mm: -20 °C to 60 °C for 0 6.0 mm: -20 °C to 85 °C"
	Main unit	-20°C to 55°C
Storage temperature		-20°C to 60 °C
Relative humidity		15 to 90%
Resistance to liquid aggressive media of the operating part (probe)		Contact with engine oil, light petroleum products and 5% brine is allowed together with a direct-view optical system
Dust and water mpermeability	Operating part (probe)	IP67
	Main unit	IP55



+7 499 350 85 07

<https://nrgdv.ru/>

6 Luzhnetskaya Naberezhnaya, building 1, floor 3, office 310,  
Moscow, 119270



Наш сайт



You Tube