

VRScope C68-M high-precision multi-functional industrial videoendoscope



VRScope C68-M

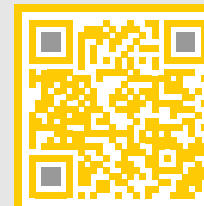
Наш сайт



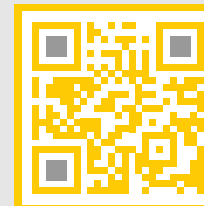
You Tube



Telegram



VK



Features

- Powerful stereo measurement tools
- Industrial touchscreen 8" HD LCD display with IPS matrix and wide angle of view
- Industrial HD camera with 1,000,000 pixel resolution
- High speed video recording
- Super-bright LED backlight
- Sensitive joystick + virtual articulation on the touchscreen display
- The modular design allows customizing the videoendoscope for any task
- High temperature alarm indicator
- Ultra-long battery life
- Quickly create inspection reports

Brief description

The VRScope C68-M are efficient high-precision industrial videoendoscopes manufactured by Coantec. The product has superior image quality with ultra-bright LED backlight, high resolution industrial camera, high speed video recording, 8-inch HD display. Easy to use thanks to the modular design, precise and smooth articulation of the probe. It is equipped with a stereo measurement function for detected defects to ensure objectivity during endoscopic testing. VRScope C68-M is applied in aviation, space industry, electric power, chemical industry, mechanical engineering, automotive industry, military industry, designed for special inspection, etc.



Efficiency features

Industrial touchscreen 8" HD LCD display with IPS matrix and wide angle of view

It effectively reproduces real colors, clear and bright images, providing fast and reliable defect detection. A wider angle of view, good image quality in all directions significantly reduce visual fatigue and increase the convenience of inspection. The touch screen is touch sensitive and easy to operate. The image allows you to detect small defects quickly and reliably.



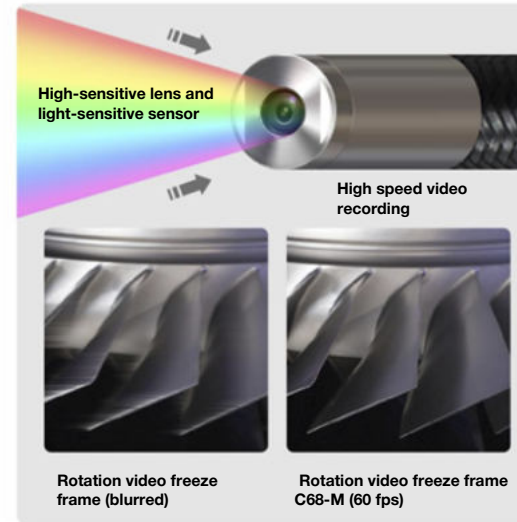
Sensitive joystick + virtual articulation on the touchscreen display

The sensitive joystick allows precise control of the bending angle of the distal end, smoothly penetrating hard-to-reach places. The virtual articulation on the touchscreen display replicates the functionality of the joystick and is designed for more precise control of the probe.



Industrial HD camera with 1,000,000 pixel resolution

Thanks to the high-quality built-in sensor, the resulting image is sharper and smoother, rich in detail. Video at 60 frames per second is smoother and more accurate, with no lags or jerks for quick detection of small defects.



High-precision stereo measurement function

Equipped with a stereo measurement function for detected defects to ensure objectivity during endoscopic inspection. The distance from point to point, from point to line and from point to surface (depth) is measured, as well as a broken line of several segments and the area of a closed domain. The measurement accuracy is achieved up to 0.01 mm with an error of less than 10%.



Efficiency features

Modular design and 180° deployable rack

The modular design and 180° deployable stand of the main unit will allow you to customize the VRScope C68-M videoendoscope for any task (suspended or mounted), providing convenient inspection and improving the quality of defect detection.



Output to an external monitor via VGA / HDMI

Connect an external monitor via VGA (optional) or HDMI (standard). It is convenient when discussing together and facilitates a more accurate assessment of the examination results.



3.5mm audio output socket

External headphones are connected to the audio output socket for recording audio tags. The ability to listen to audio tags is a significant time saver, allowing to quickly detect critical moments during viewing.



Built-in Bluetooth and WiFi wireless communication modules

The built-in Bluetooth wireless communication module is used to transfer images or video files quickly and conveniently. The built-in Wi-Fi allows downloading and uploading data.



Efficiency features

High-strength probe

The probe is made of high-strength tungsten braid, rotates 360°, has a degree of dust and water resistance of the probe - IP67, corrosion resistance, high wear resistance. Contact with machine oil, light petroleum products and 5% salt solution is allowed.



The TPU shockproof pads at the corners

The design of the device includes TPU shockproof pads on the corners. The result is aesthetic industrial design, shock and drop resistance, effective improvement of equipment protection and higher reliability.



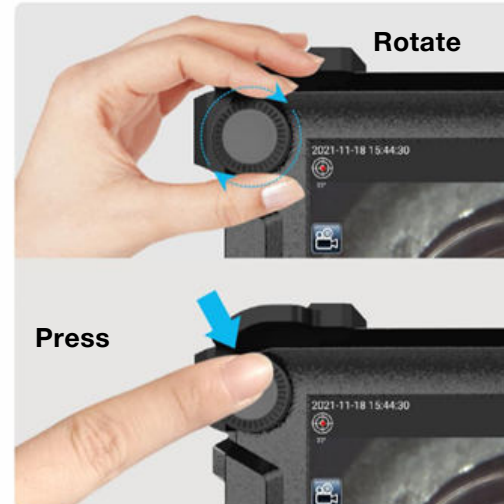
Large capacity memory for data storage

The VRScope C68-M has 2GB RAM and 16GB storage memory as standard, expandable up to 64GB. Data can also be stored on an external USB memory device. storage memory 16 GB expandable up to 64 GB



Multifunction wheel and button

The unique design of the multifunction button wheel makes it much easier to switch and adjust functions in the menu while working in the field with gloves on. Also, the hotkeys on the joystick provide access to the most important functions.



Efficiency features



Photo editing function

The text and graphic markings such as full screen captions, graffiti over the image, handwritten lines, arrows, rectangles, circles, text, etc. can be applied to the photo.

Ultra-long operating time

A replaceable, high-capacity rechargeable lithium battery and charger are used to ensure long operating times.



Battery capacity 7.4 V 10000
mAh Battery life >4 hr

Technical specifications

OPERATING PART (PROBE)

Model		VRScope C68 - 4020M	VRScope C68 - 4030M	VRScope C68 - 6020M	VRScope C68 - 6030M	VRScope C68 – 6040M	VRScope C68 – 6050M	VRScope C68 – 8050M	VRScope C68 – 6070M	VRScope C68 – 8070M	VRScope C68 – 80100M
Operating part (probe)	Probe diameter	ø 4,0 mm		ø 6,0 mm				ø 8,0 mm	ø 6,0 mm	ø 8,0 mm	
	Probe length	2,0 m	3,0 m	2,0 m	3,0 m	4,0 m	5,0 m	5,0 m	7,0 m	7,0 m	10,0 m
	Outer braid	High-strength tungsten braid									
	Probe flexibility	Uniform rigidity									
	Interchangeability	Possible for all probe models									
	Temperature sensor	2-stage indicator for high temperature alarm									
Bendable part	Bending angle up/ down/ right/ left	up 150°	up 130°	up 150°	up 130°	up 130°	up 110°	up 110°	up 90°	up 90°	up 90°
	Bending mechanism	Electronic distal bend control with 360° rotating joystick / Precise bend control mode via virtual joystick on touchscreen display.									
Approximate weight of the joystick		≤1,0 kg									
Lighting		Super-bright LED backlight									
Direct view optical system (D)	Field of view	85°		120°		100°					
	Depth of focus for stereo measurements	from 5 up 100 mm		from 7 up 150 mm		or 8 up 80 mm					
	Depth of focus for inspection	from 5 mm up ∞		from 7 mm up ∞		from 8 mm up ∞					
	Lens type	built-in for stereo measurements and inspection, without replacing lenses									
Optical side vision system (S)	Field of view	70°									
	Depth of focus for stereo measurements	from 5 up 100 mm		from 7 up 150 mm		from 8 up 80 mm					
	Lens type	built-in for stereo measurements and inspection, without replacing lenses									
	Depth of focus for inspection	unavailable		from 7 mm до ∞		from 8 mm up ∞					
	Lens type	interchangeable optical									

MAIN UNIT		
Weight (with battery)		1.85 kg
Dimensions (WxDxH)		245 mm x 195 mm x 90 mm (without protruding parts)
Transport case dimensions		555 x 240 x 350 mm The hand luggage size of most airlines.
Display		Industrial 8-inch HDLCD touchscreen with IPS matrix and wide angle of view
Display resolution		H1024 x V768 (pixels)
LCD brightness levels		Adjustable brightness mode for 0-100 levels
Power supply	AC network	220± 10% V, 50 Hz with AC adapter
	Battery	7.4V, 10,000 mAh. Battery life: >4 hours.
Video output standard		HDMI (standard) / VGA socket (optional)
Headset (microphone input/ audio output)		3.5mm audio output socket
SOFTWARE FEATURES		
Image functions		5x digital zoom and full screen display mode / image centering, 9-step brightness adjustment
Dynamic noise suppression		In real time to improve image quality
Image magnification		5x magnification during examination.Supports enlarging the image while viewing photos via the "pinch" gesture of the touch display
Functional modes		Reference color mode, black and white mode, negative mode, high color density modes
Rotate images		0°, 90°, 180°, 270° rotation
Annotations		Lines, arrows, rectangles, circles, text
Bluetooth connection		In standard design
WiFi module		In standard design
Menu languages		Chinese, English, French, Russian.
Data entry languages		Chinese, Russian, English, German, French. Input languages can be downloaded when WiFi is activated.

RECORDING CONTROL FEATURES

Information media	RAM	2 GB	
	Data storage memory	Standard storage capacity -16 GB, expandable to 32 GB or 64 GB (optional)	
	Optional	Two external USB flash drives	
Watermark settings		Time/ date	
Static image recording	Resolution	H1280 x V720 (pixels), 1,000,000 pixels	
	Recording format	Compression format: JPEG / BMP	
	Image recording	Image capturing supported while video recording	
Video recording	Resolution	H1280 x V720 (pixels), 1,000,000 pixels	
	Recording format	MPEG 4	
	Frame rate	30 fps /60 fps (for probes up to 3.0 m in length)	30 fps

STEREO MEASUREMENT FUNCTIONS

Distance	Distance between two points		
Dot-to-line	Perpendicular distance between a point and a user-defined line		
Depth/Height	Perpendicular distance between a point and a user-defined plane		
Area/Lines	Measurement of the perimeter and area of the zone bounded by segments of broken lines		
Linear dimensions measurements	0,29 to 25.0 mm		
Depth measurements	0,4 to 20.0 mm		
Permissible error limits	10%		

OPERATING CONDITIONS

Operating temperature	Operating part (probe)	for 0 4.0 mm: -20 °C to 60 °C for 0 6.0 mm and 8.0 mm: -20 °C to 80 °C	
	Main unit	-20°C to 55°C	
Storage temperature		-20°C to 60 °C	
Relative humidity		From 15 to 90%	
Resistance to liquid aggressive media of the operating part (probe)		Contact with engine oil, light petroleum products and 5% brine is allowed together with a direct-view optical system	
Dust and water resistance	Operating part (probe)	IP67	
	Main unit	IP55	