

Multifunctional industrial videoendoscope VRScope C68-E



VRScope C68-E

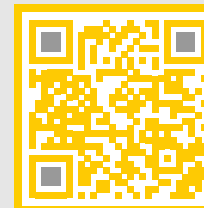
Наш сайт



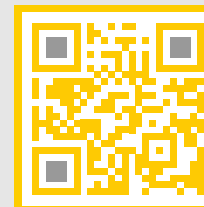
You Tube



Telegram



VK



Features

- The modular design allows you to customize the video endoscope for any task and significantly facilitates work during long examinations.
- Industrial touchscreen 8" HD LCD display with IPS matrix and wide angle of view
- Industrial HD camera with 1,000,000 pixel resolution High speed video recording
- Super-bright LED backlight
- Sensitive joystick + virtual articulation on the touchscreen display
- The modular design allows customizing the videoendoscope for any task
- High temperature alarm indicator
- Ultra-long battery life
- Quickly create inspection reports

Brief description

The VRScope C68-E is an efficient multifunctional industrial videoendoscope manufactured by Coantec. The product has superior image quality with ultra-bright LED backlight, high resolution industrial camera, high speed video recording, 8-inch HD display. Easy to use thanks to the modular design, precise and smooth articulation of the probe. VRScope C68-E is applied in aviation, space industry, electric power, chemical industry, mechanical engineering, automotive industry, military industry, designed for special inspection, etc.



Efficiency features

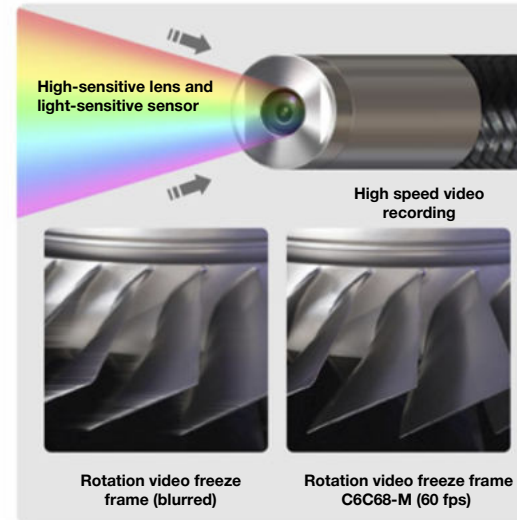
Industrial touchscreen 8" HD LCD display with IPS matrix and wide angle of view

It effectively reproduces real colors, clear and bright images, providing fast and reliable defect detection. A wider angle of view, good image quality in all directions significantly reduce visual fatigue and increase the convenience of inspection. The touch screen is touch sensitive and easy to operate. The image allows you to detect small defects quickly and reliably.



Industrial HD camera with 1,000,000 pixel resolution

Thanks to the high-quality built-in sensor, the resulting image is sharper and smoother, rich in detail. Video at 60 frames per second is smoother and more accurate, with no lags or jerks for quick detection of small defects.



Sensitive joystick + virtual articulation on the touchscreen display

The sensitive joystick allows precise control of the bending angle of the distal end, smoothly penetrating hard-to-reach places. The virtual articulation on the touchscreen display replicates the functionality of the joystick and is designed for more precise control of the probe.



Lenses with focal length

The unique design of the distal end with a double threaded connection, allows using interchangeable lens for inspection without any fear. The VRScope C68-E models use short-, medium-, and long-focus cameras to inspect objects at varying distances from the probe.



Efficiency features

Modular design and 180° deployable rack

The modular design and 180° deployable stand of the main unit will allow you to customize the VRScope C68-E videoendoscope for any task (suspended or mounted), providing convenient inspection and improving the quality of defect detection.



3.5mm audio output socket

External headphones are connected to the audio output socket for recording audio tags. The ability to listen to audio tags is a significant time saver, allowing to quickly detect critical moments during viewing.



Output to an external monitor via VGA / HDMI

Connect an external monitor via VGA (optional) or HDMI (standard). It is convenient when discussing together and facilitates a more accurate assessment of the examination results.



Built-in Bluetooth and WiFi wireless communication modules

The built-in Bluetooth wireless communication module is used to transfer images or video files quickly and conveniently. The built-in Wi-Fi allows downloading and uploading data.



Efficiency features

High-strength probe

The probe is made of high-strength tungsten braid, rotates 360°, has a degree of dust and water resistance of the probe - IP67, corrosion resistance, high wear resistance. Contact with machine oil, light petroleum products and 5% salt solution is allowed.



The TPU shockproof pads at the corners

The design of the device includes TPU shockproof pads on the corners. The result is aesthetic industrial design, shock and drop resistance, effective improvement of equipment protection and higher reliability.



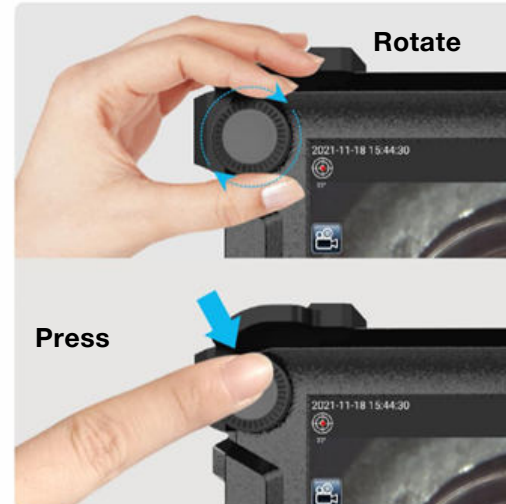
Large capacity memory for data storage

The VRScope C68-E has 2GB RAM and 16GB storage memory as standard, expandable up to 64GB. Data can also be stored on an external USB memory device. storage memory 16 GB expandable up to 64 GB



Multifunction wheel and button

The unique design of the multifunction button wheel makes it much easier to switch and adjust functions in the menu while working in the field with gloves on. Also, the hotkeys on the joystick provide access to the most important functions.



Efficiency features



Photo editing function

The text and graphic markings such as full screen captions, graffiti over the image, handwritten lines, arrows, rectangles, circles, text, etc. can be applied to the photo.

Ultra-long operating time

A replaceable, high-capacity rechargeable lithium battery and charger are used to ensure long operating times.



Technical specifications

OPERATING PART (PROBE)

Model		VRScope C68 - 3920E	VRScope C68 - 3930E	VRScope C68 - 6020E	VRScope C68 - 6030E	VRScope C68 - 6040E	VRScope C68 - 6050E	VRScope C68 - 8050E	VRScope C68 - 6070E	VRScope C68 - 8070E	VRScope C68 - 60100E	VRScope C68 - 80100E
Operating part (probe)	Probe diameter	ø 3,9 mm		ø 6,0 mm				ø 8,0 mm	ø 6,0 mm	ø 8,0 mm	ø 6,0 mm	ø 8,0 mm
	Probe length	2,0 m	3,0 m	2,0 m	3,0 m	4,0 m	5,0 m	5,0 m	7,0 m	7,0 m	10,0 m	10,0 m
	Outer braid	High-strength tungsten braid										
	Probe flexibility	Uniform rigidity										
	Interchangeability	Possible for all probe models										
	Temperature sensor	2-stage indicator for high temperature alarm										
Bendable part	Bending angle up/ down/ right/ left	up to 150°	up to 130°	up to 150°	up to 130°	up to 130°	up to 110°	up to 110°	up to 90°	up to 90°	up to 90°	up to 90°
	Bending mechanism	Electronic distal bend control with 360° rotating joystick / Precise bend control mode via virtual joystick on touchscreen display.										
Approximate weight of the joystick		1,1 kg										
Lighting		Super-bright LED backlight										
Direct view optical system (D)	Field of view	120°										
	Depth of focus	5 to 50 mm / 5 to 100 mm / from 25 mm to (select when ordering)		5 to 30 mm / 8 to 80 mm / from 20 mm to " (select when ordering)								
	Lens type	integrated optical										
Optical side vision system (S)	Field of view	70°										
	Depth of focus	5 to 50 mm / 5 to 100 mm / 25 mm to (select when ordering)		5 to 30 mm / 8 to 80 mm / 20 mm to " (as for direct view)								
	Lens type	integrated optical										
	Depth of focus	unavailable		5 to 30 mm / 8 to 80 mm / 20 mm to " (as for direct view)								
	Lens type	interchangeable optical										

MAIN UNIT		
Weight (with battery)		1.85 kg
Dimensions (WxDxH)		245 mm x 195 mm x 90 mm (without protruding parts)
Transport case dimensions		555 x 240 x 350 mm The hand luggage size of most airlines.
Display		Industrial 8-inch HDLCD touchscreen with IPS matrix and wide angle of view
Display resolution		H1024 x V768 (pixels)
LCD brightness levels		Adjustable brightness mode for 0-100 levels
Power supply	AC network	220± 10% V, 50 Hz with AC adapter
	Battery	7.4V, 10,000 mAh. Battery life: >4 hours.
Video output standard		HDMI (standard) / VGA socket (optional)
Headset (microphone input/ audio output)		3.5mm audio output socket
SOFTWARE FEATURES		
Image functions		5x digital zoom and full screen display mode / image centering, 9-step brightness adjustment
Dynamic noise suppression		In real time to improve image quality
Image magnification		5x magnification during examination.Supports enlarging the image while viewing photos via the "pinch" gesture of the touch display
Functional modes		Reference color mode, black and white mode, negative mode, high color density modes
Rotate images		0°, 90°, 180°, 270° rotation
Annotations		Lines, arrows, rectangles, circles, text
Bluetooth connection		In standard design
WiFi module		In standard design
Menu languages		Chinese, English, French, Russian.
Data entry languages		Chinese, Russian, English, German, French. Input languages can be downloaded when WiFi is activated.

RECORDING CONTROL FEATURES

Information media	RAM	2 GB	
	Data storage memory	Standard storage capacity -16 GB, expandable to 32 GB or 64 GB (optional)	
	Optional	Two external USB flash drives	
Watermark settings		Time/ date	
Static image recording	Resolution	H1280 x V720 (pixels), 1,000,000 pixels	
	Recording format	Compression format: JPEG / BMP	
	Image recording	Image capturing supported while video recording	
Video recording	Resolution	H1280 x V720 (pixels), 1,000,000 pixels	
	Recording format	MPEG 4	
	Frame rate	30 fps /60 fps (for probes up to 3.0 m in length)	30 fps

OPERATING CONDITIONS

Operating temperature	Operating part (probe)	for 0 4.0 mm: -20 °C to 60 °C for 0 6.0 mm and 8.0 mm: -20 °C to 80 °C	
	Main unit	-20°C to 55°C	
Storage temperature		-20°C to 60 °C	
Relative humidity		From 15 to 90%	
Resistance to liquid aggressive media of the operating part (probe)		Contact with engine oil, light petroleum products and 5% brine is allowed together with a direct-view optical system	
Dust and water resistance	Operating part (probe)	IP67	
	Main unit	IP55	